



GUERNSEY-MUSKINGUM ELECTRIC COOPERATIVE CURRENTLY SPEAKING



MESSAGE FROM THE GENERAL MANAGER

EXCITEMENT JUST AROUND THE CORNER

As I write this article on Aug. 21, excitement abounds in the office as we prepare to witness a solar eclipse for the first time since 1979. In a few minutes, the moon will pass between the Earth and the sun and the afternoon will briefly take on the appearance of a very cloudy day. And in another seven years, we get to do it all over again. It is amazing that this simple event has created an almost party-like atmosphere across the country. I must say that I am happy to see that. At a time when the news bombards us with political tensions from within and outside of our country, it is refreshing to focus on something as simple as a brief celestial display. Perhaps it reminds us of just how small we are in an enormous universe.

Speaking of a party-like atmosphere, now is a good time to mark your calendars for the second annual Family Fun Day on Saturday, Oct. 7. Deerassic Park will open the gates from noon until 4 p.m. to members of Guernsey-Muskingum Electric and their families so they can enjoy all that the park has to offer. There

will be fishing, archery, inflatable play houses, food, and much more. Read all about it in the article that follows on Page 20B. Members who attended last year seemed to really enjoy the day, and it gave us an opportunity to talk and get to know each other a little better. I should also note that Deerassic is a member of the cooperative, so it is great to partner with them for this event. We hope to see you there!



Jerry Kackley
General Manager/CEO

Now I better check on that solar eclipse. Oh no, I think I missed it! I'd better mark my calendar for April 2024. Take care and God bless.

*Have a wonderful day!
God Bless! Jerry*



Mark your calendar for

Guernsey-Muskingum Electric's Holiday Workshop

Wednesday, Nov. 15 at 6 p.m.

You're sure to have fun!

Refreshments and door prizes
will be provided.





GUERNSEY-MUSKINGUM ELECTRIC COOPERATIVE CURRENTLY SPEAKING



ASK YOUR ENERGY ADVISOR

The dreaded **VAMPIRE LOADS**



Ray Crock, Energy Advisor

Perhaps you are familiar with an undesirable aspect of the electronic revolution: vampire loads. Vampire loads come from devices that use electricity even when they appear to be off. The primary culprits are chargers, set-top television boxes, instant-on televisions, and gaming systems. There are others, but these four represent the major offenders.

Let's look at how these vampire loads occur and why they are approaching 10 percent of average household electric use, according to the Environmental Protection Agency.

Chargers take the 120 VAC (volts alternating current) power at the outlet and reduce it to the voltage required by the connected device, usually 5 to 12 VDC (volts direct current). Obviously, when your device is charging, the charger is using electricity, but you might be surprised to learn that chargers are still using small amounts of energy when they're not connected to a device.

Television set-top boxes also consume energy when they appear to be inactive. Anytime the set-top box's lights are on, it is using power. Like chargers, they use more when the television is on, but they are always working — even when the TV is off. This is especially true for those devices with a DVR function that records your favorite TV shows.

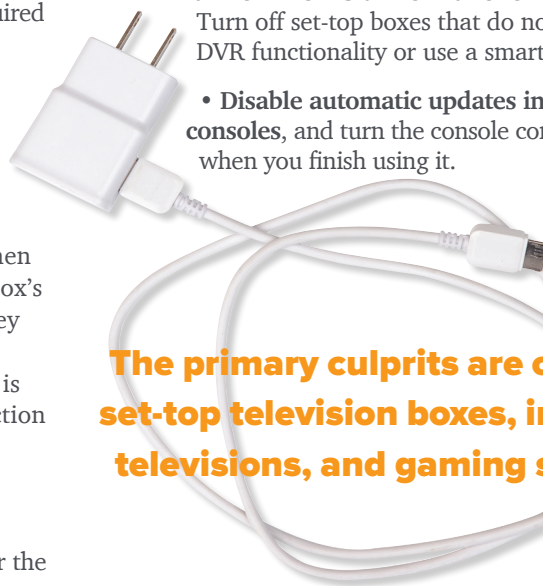
The instant-on television is another culprit. The intention of the “instant-on” feature is instant gratification for the viewer, meaning no waiting for the TV to turn on and warm up. Unfortunately, for that convenience, the TV must be on at nearly full power. So, in this mode, it's a real energy drain.

The typical gaming console can use as much energy as a regular refrigerator, even when it's not being used. Make sure to check the console settings and disable automatic updates, which is where the energy drain comes from. Games on the console are frequently updated, which requires a lot of electricity.

So how does the average family combat these dreaded vampire loads? Garlic garlands? Silver bullets?

Fortunately, none of the remedies of fable are necessary. You just need to change how you handle these energy-sucking electronics. Here are a few suggestions.

- **Unplug chargers when not in use.**
- **Invest in smart power strips.** These look like normal power strips but have a twist; one of the outlets is the “master” that receives power all the time. The others are off. When the device connected to the master outlet turns on, the rest of the outlets receive power too. Have the television in the master outlet, and when you turn it on, the set-top box, speakers, streaming devices, etc., will turn on, too. They are also ideal for PCs and their peripherals.
- **Turn off the instant-on function on your TV.** Turn off set-top boxes that do not contain the DVR functionality or use a smart power strip.
- **Disable automatic updates in gaming consoles,** and turn the console completely off when you finish using it.



The primary culprits are chargers, set-top television boxes, instant-on televisions, and gaming systems.

- **When replacing a device, look for an ENERGY-STAR®-rated product.**

Vampire loads are a real problem that will only continue to grow as the digital age advances. But you can fight the vampires with vigilance and application of the recommendations above. Check with Guernsey-Muskingum Electric Cooperative for additional suggestions and energy-saving advice.



ENERGY EFFICIENCY

IT PAYS TO BUY **QUALITY!**

TWO WAYS TO SAVE:

- 1** Rebates — For water heaters purchased at Guernsey-Muskingum:

Prices include: **FREE** Delivery
 FREE Maintenance (except cleaning),
 including Parts & Labor
 FREE Pressure Relief Valve
 FREE Radio-Controlled Switch

50-gallon: dimensions 28" dia. x 52" hght.
 (Weight = 230 lbs.)

\$625 Wholesale Cost
 \$250 Member Rebate
 \$375 Net Member Cost, plus tax

80-gallon dimensions 32" dia. x 59" hght.
 (Weight = 345 lbs.)

\$850 Wholesale Cost
 \$250 Member Rebate
 \$600 Net Member Cost, plus tax

Installation may be available for an approximate charge of \$120.

- 2** Cash back — for electric storage water heaters purchased elsewhere, with installation of a radio-controlled switch (hybrid water heaters not eligible)

\$100 cash back for:

- 50-gallon
- 7-year warranty (or longer)
- 91 percent or higher Energy Factor

\$50 cash back for

- 40-gallon
- 7-year warranty (or longer)
- 91 percent or higher Energy Factor



**Vaughn (stone-lined)
 Water Heaters**
11-year warranty
3" foam insulation
4" hand-hole cleanout

**Manufactured
 set at 125 degrees**

To qualify for cash-back incentives and discounts, members must allow the free installation of a radio-controlled switch. Prices and rebates subject to change. Call Guernsey-Muskingum for more details at 800-521-9879.



GUERNSEY-MUSKINGUM ELECTRIC COOPERATIVE
CURRENTLY SPEAKING

Family Fun Day!

Saturday, Oct. 7

12-4 p.m. at Deerassic Park
14250 Cadiz Rd., Cambridge

Free food:
Hot dogs
Chips
Ice cream
Water

Activities will include:

- ◆ Fishing
- ◆ Canoe/kayaking
- ◆ Pellet range
- ◆ Kids games
- ◆ High-voltage safety demonstration
- ◆ Archery
- ◆ Soft-tip archery
- ◆ Deer viewing
- ◆ Inflatable obstacle course

Educational booths, including:

- ◆ Energy Wall





Adventure, learning, and family quality time — at Guernsey-Muskingum Electric Cooperative, we think all of these are important to incorporate into your life. That's why we're hosting Family Fun Day on Saturday, Oct. 7, 2017, from noon to 4 p.m. at Deerassic Park in Cambridge.

Whether you want to brush up on archery skills, learn how to make your home more energy efficient, attempt the inflatable obstacle course, enjoy decadent ice cream, or simply watch the grazing deer at the park, there's something for everyone.

Founded in 1996, the park has an education center on 130 acres, with a 3-acre pond, trails, and 15,000 square feet of pavilion space. The Deerassic Park Education Center also maintains an educational herd of deer for youth and families to view, while the main building houses a unique collection of mounted animals and artwork. Included in the collection are replicas of world-record "Beatty Buck," harvested by Mike Beatty, and the one-of-a kind "Megaloceros: Irish Elk" replica from world-renowned taxidermist Ken Walker of the enormous creature that went extinct over 10,000 years ago.

Come out and join GMEC for a day of outdoor family fun, where you can simultaneously take away a new factoid about your co-op — and take dozens of photos of your children in action. Free food, water, and ice cream will be provided.

Please call GMEC at 800-521-9879 for more information. We hope to see you there!





GUERNSEY-MUSKINGUM ELECTRIC COOPERATIVE CURRENTLY SPEAKING



CAPITAL CREDITS



Official Notice of Intention to Reallocate Patronage Capital

The following is a listing of former members of Guernsey-Muskingum Electric Cooperative, Inc., who received service from the cooperative in prior years. Attempts were made to mail capital credits checks to these former members in 2013. These capital credit checks have remained unclaimed for at least four years.

The cooperative's Code of Regulations provides that capital credits payments that remain unclaimed for four years shall, after

proper notice is given, be reallocated to the current margins of the cooperative. After such reallocation, these unclaimed payments will no longer be available for payment to the former members listed.

If you have any information on any of the names published in this listing, please call the cooperative's office at one of the numbers listed below. Thank you for your help in locating our former members.

New Concord
740-826-7661

Toll Free
800-521-9879

Aerial Communications
Arahaman Investment Inc
Ameritech Cellular Serv
Arrow Oilfield Services
Ayers, Dennis
Ayres, Dorothy M
Bailey, Carl
Baker, Terry B
Bauknecht, John
Bayly, William
Beckett, Ernest J
Berea Oil & Gas Corp
Berry, M J
Black, Jack L
Bollinger, Ruth
Booth, Ralph O
Boyle, Dennis
Brown, Charles W
Callander & Kimbrel Inc
Carless Resources Inc
Carpenter, Larry R
Carter, Lela
Chambers, Darrol
Christa Oil Co
Clark, Henry J
Collins, Larry
Columbia Naturl Resourc
Concord Sq Ltd-Sewage-S
Consol Resc Of America
Crall, Angela M
Davis, Catherine
Davis, Harold
Davis, Robert
Davis, Rodney
Dawson, Joan
Deal, Glen M
Degarmo, Steve E
Delong, Merry
Dinkins, Jeffrey S
Dodd, James C
Downard, James D
Dragosin, Charles A
Dreblow, Lewis M
Dupler, Cassandra

Durbin, Thomas L
Dutcher, Melvin
Eastern States Oil & Ga
Edwards, Marsha
Edwards, Staci A
Eikenberry, Alice M
Enterprise Gas & Oil
Ewing, Barbara J
Filkill, Jeffery Dsr
Findley Oil Co
Floyd, Monna
Ford, Harry D
Ford, Michael L
Fouts, Frank
Frontiervision Partners
Fudge, Larry
G.W.F. Corp
Gall, Ronald
Gaspro Energy Inc
Giffen, James L
Gospel Light Bapt Churc
Gray, David K
Gross, William
Grubb David R
Gum, Scott A
Hall, Vicki
Harney, William E
Harris, Robert
Hecker, Deloris
Hidden Springs Farm Com
Hill, Barry D
Holt, Ronald
Hopkins, Annette C
Hoskinson, Doris
House, Harold D
Howell, Donald E
Hutchison, Tammy J
Imes, James P
Jackson, Delma
Jackson, Elaine
Jacobs, Jerry L
Jacobs, Mark
"James T Johnson Trust"
Jarrell, Daniel

Jeffers, Debra
Johnson, Brenda L
Johnson, Gary
Johnson, Jerry L
Jones, N J
Keyes, Robert J
King, John E
King, Roger Ejr
King Limestone
Kinsey, Kathy
Knowlton, W
Knowlton's Industries
Kovach, Mary
Kurtz, John J
Lagle, David
Landprovest Inc
Lane, Rhonda
Larcamp, Charles J
Larrick, Arthur
Lashley, William R
Leader Development Corp
Lewis, Alfred
Loudermil, Roy
Maple, Mark D
Marple, Daniel L
Massey, Trudy
Mcconnell, Terry
McCune, Donald
Mcelfresh, Jacelyn D
Mcfm Oil Co
Mcguire, Steve J
Mell, Douglas L
Meta Chemical Co Inc
Metz, Charalet
Milestone Comm Of Ohio
Miller, Edwin L
Miller, Richard
Mills, Earl
Mirdik, John R
Mission Gas
Mohler, Raymond H
Moody, Peggy L
Moore and Associates
Morehead, James

Mumma, Paul
Murphy, Kevin D
Musk Valley Fish Assn
Muskingum Mining Inc
Myers, Sandra S
Myers, William E
Natland Energy
Ohio Bell Telephone Co
"Ohio Inns, Inc"
Ohio Partners Oil Co
Osage Oil & Gas
Pallet Recycling
Peabody Coal Co
Pemco Gas Inc
Peterson, David K
Petronelis, Russell A
Phillips, Curtis A
Porter, Michael A
Powers, J M
Price, Paul R
Raber, John
Ralph, Deborah A
Reed, Ina M
Reese, Anne L
Reeves, James L
Rehl, Robert
Reinhart, Charlotte R
Repasky, Alexander
Rhoades, Roger L
Richards, Norman E
Richmond, Lance
Riddle, Samuel Jr
Roberts, William E
Robidoux, Susanne
Rodgers & Rosen
Roger C Dupke Oil Co In
Rogoski, John
Ruggles, Janet E
Russell, George W
Rutter, Larry
S H Parks & Assoc Inc
Salsbury, Mark A
Sanchez, Serafin W
Scheltz, F

Schradel, Shirley
Sigrist, Francis J
Smith, Curtis R
Smith, Kevin T
Smith, Richard A
Snyder, George
Sprankel, Thomas E
St Clair, Margaret
Stephens, James V
Stocker & Sitler Inc
Strandberg, Patricia
Swinderman, Kenneth
Swope, Ronald E
Tanner, William
Thomas, Gene R
Thomas, Janet L
Tiger Oil Co
Times Mirror Cable T V
Timmons, John M
Tippel, Susan A
Todd, James G
Treat, William D
Tri-Ad Corporation
Troutman, Derl
Tysinger, R J
Urban, Leo C
Usa Waste Services Inc
Verizon
Vest, Edmond
Ward, Esther
Ward, Kenric
Well Care Services Inc
Western Co Of America
Western Reserve Telepho
Wheeler, Carl D
Wickham, Verna L
Wilkey, Everett L
Wilson, Douglas
Wilson, Marlene
Yoder, Elmer

Nondiscrimination Statement

In accordance with Federal civil rights law and U.S. Department of Agriculture (USDA) civil rights regulations and policies, the USDA, its Agencies, offices, and employees, and institutions participating in or administering USDA programs are prohibited from discriminating based on race, color, national origin, religion, sex, gender identity (including gender expression), sexual orientation, disability, age, marital status, family/parental status, income derived from a public assistance program, political beliefs, or reprisal or retaliation for prior civil rights activity, in any program or activity conducted or funded by USDA (not all bases apply to all programs). Remedies and complaint filing deadlines vary by program or incident.

Persons with disabilities who require alternative means of communication for program information (e.g., Braille, large print, audiotape, American Sign Language, etc.) should contact the responsible Agency or USDA's TARGET Center at 202-720-2600 (voice and TTY) or contact USDA through the Federal Relay Service at 800-877-8339. Additionally, program information may be made available in languages other than English.

To file a program discrimination complaint, complete the USDA Program Discrimination Complaint Form, AD-3027, found online at http://www.ascr.usda.gov/complaint_filing_cust.html and at any USDA office or write a letter addressed to USDA and provide in the letter all of the information requested in the form. To request a copy of the complaint form, call 866-632-9992. Submit your completed form or letter to USDA by:

- (1) mail: U.S. Department of Agriculture
Office of the Assistant Secretary for Civil Rights
1400 Independence Avenue, SW
Washington, D.C. 20250-9410;
- (2) fax: 202-690-7442; or
- (3) e-mail: program.intake@usda.gov.

This institution is an equal opportunity provider.

STEALING ELECTRICITY AND METER TAMPERING ARE CRIMES

Since August 1978, a revised Ohio law has been in effect covering theft of utility service and tampering with utility equipment. The statute provides that a person does not have to be seen tampering with a meter to be held responsible for such action. Prior to the revision in the law, it was difficult to prosecute a person for meter tampering unless the action was witnessed.

In addition, in prosecution for a user's reconnecting a device that was disconnected by a utility, such activity now is considered prima facie evidence that the user intended to defraud the utility.

The law defines theft of a utility service as a first-degree misdemeanor if the value of the stolen electricity, plus any utility equipment repair, is less than \$150. It's a fourth-degree felony if the value is more than \$150 or if the offender was previously convicted of the charge. Tampering convictions carry similar penalties.

Tampering is defined as "to interfere with, damage, or bypass a utility meter, conduit, or attachment with intent to impede the correct registration of a meter or the proper function of a conduit or attachments."

Conviction can bring from six months in jail and a \$1,000 fine to five years in jail and a \$2,500 fine.

Meter tampering costs all of us. It costs the cooperative, and it costs you. And it's downright dangerous. If you witness someone tampering with an electric meter, contact your cooperative office. Stealing electricity is a crime, and anyone caught violating the law will be prosecuted.



GUERNSEY-MUSKINGUM ELECTRIC COOPERATIVE CURRENTLY SPEAKING



CO-OP PEOPLE



Pictured from left to right: Vicki Maple, Kendra Kent, Dale Burnett, Susan Sands, Dylan Daniels, and Julie Janicki.

KARAOKE COUNTRY STYLE WINNERS

The Karaoke Country Style Contest was an opening-day event sponsored by Guernsey-Muskingum Electric Cooperative at the 171st Muskingum County Fair. Singers in four age categories competed with their favorite tunes.

In the under-18 division, the winner was Kendra Kent of Zanesville. The winner for the 18 to 40 age group was Julie Janicki of Chandlersville. The winner of the 41 to 60 age group was Dale Burnett of Zanesville. The winner in the over 60 age category was Susan Sands of Zanesville.

Each winner received a \$50 gift card, and all participants received a sandwich and drink coupon to use at the fair. Judges for the evening were Dylan Daniels and Vicki Maple. Sound was provided by Sandy Groves.



Beth Motta retires

Beth Motta is retiring from Guernsey-Muskingum Electric after 25 years of service.

She first joined the cooperative in July 1991 as a part-time maintenance dispatcher. In October 1992, she moved to the member accounting department for the full-time position of member accounting specialist/field services, and she was in that position until her retirement in May 2017.

We thank Beth for her many years of dedicated service, and we congratulate her on her retirement.





NOTES

Geothermal heating/cooling system \$300 rebate

We have a \$300 rebate to help pay for the most efficient underground heating, cooling, and hot water system available today. To be eligible, the geothermal unit must be ENERGY STAR®-rated, have a radio-controlled switch installed, and have at least a 40-gallon capacity. More than 280 of our members are currently using geothermal.

Dual Fuel - \$300 rebate

If you install a new add-on electric heat pump with a fossil-fuel back-up and have an electric water heater with at least 40-gallon capacity, you are eligible for a \$300 rebate. Radio-controlled switches are required to be installed on both the heat pump and water heater. Please call your cooperative for details. More than 880 members are using dual fuel.

Cool Returns - \$100 rebate

Are you having central air conditioning installed or a new electric heat pump with electric resistance heat back-up? Allow your cooperative to install a radio-controlled switch and receive a \$100 rebate check. More than 160 members are using cool returns.

Water heater with a hole

The four-inch hole in the side of our tank is great for cleaning out sediment. This rebated tank is available for free delivery. We also have \$50 or \$100 checks to send you if you purchase a tank somewhere else. Give us a call for details.

Water heater installation available

If you purchase your water heater from GMEC, Member Services Technician Tim Fisher may install your water heater for an additional charge. Give us a call.

Radio-controlled switch

What a deal! If you don't already have a radio-controlled switch (RCS) for your electric water heater, at least 40-gallon capacity, please call and

Tim Fisher will install one for free. More than 5,300 GMEC members have an RCS on their water heaters. This entitles you to a discount and free maintenance (except cleaning) including parts and labor on your electric water heater. Some exclusions apply; call us for details.

GenerLink™

We want you to use your portable generator safely. Call the member services department at GMEC and ask them about GenerLink™. GenerLink eliminates the use of extension cords and other connections that can be dangerous to members and linemen.

Meter Reading

You can enter your meter readings online at our website, www.gmenergy.com. And as always, you can mail your readings or call us 24 hours a day with meter readings.

Co-op Connections Card

The Co-op Connections Card is free to all GMEC members, and one card can be used by the entire family. The card can also be used to receive discounts nationwide on lodging, entertainment, dining, and more. Visit www.gmenergy.com and click on the link to explore the possible discounts available to you.

Is your name and account number here?

If it is, call the cooperative's office and receive a FREE home change-out to compact fluorescent light-bulbs (limit 6 bulbs). Thanks for reading the local pages of *Ohio Cooperative Living*.

#24-0311-85-01..... Gene Mathews
#21-0391-45-02..... James Snith
#12-0705-51-03..... Kevin Sparks
#40-0181-66-04..... Crystal A Miller
#43-0152-47-02..... Jean Yoder
#72-0027-77-03..... Sarah H Bashford

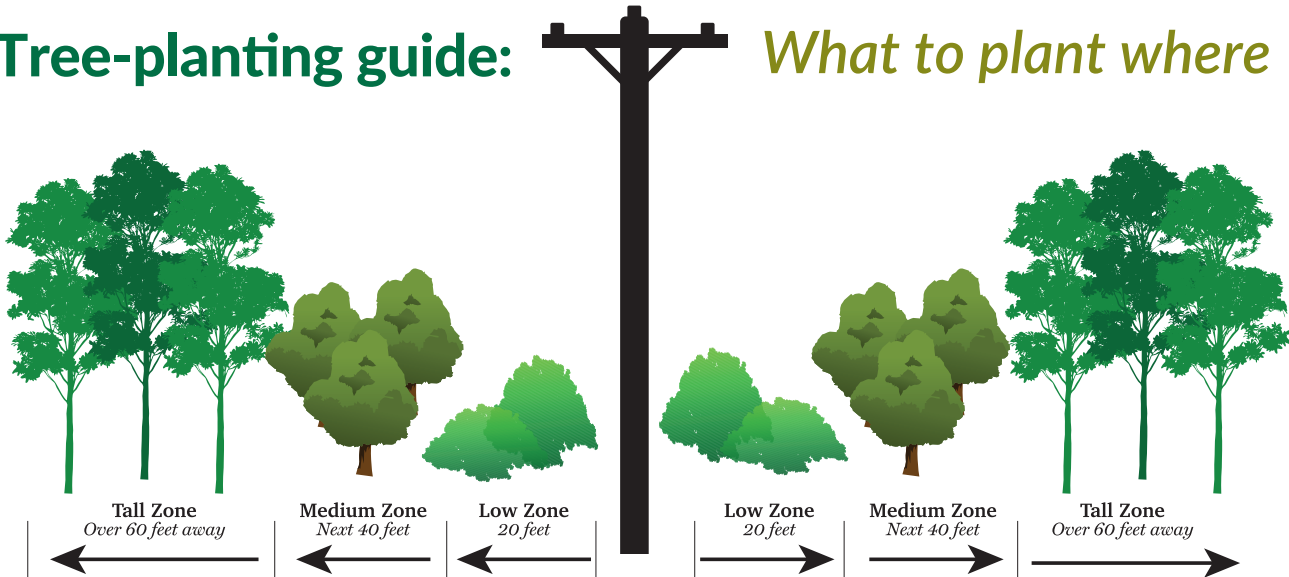




GUERNSEY-MUSKINGUM ELECTRIC COOPERATIVE CURRENTLY SPEAKING

Tree-planting guide:

What to plant where



Tall Zone	Medium Zone	Low Zone—Utility Easement Area	
Tall or large trees with maximum height of over 60 feet.	Plant medium trees with a maximum height of 30–60 feet.	(Under wires)—It is better not to plant in this area. If you do, plant shrubs only or small, low-growing ornamental trees with a maximum height of 15 feet.	GMEC will maintain 20 feet in any direction around and anything above energized primary conductors on a five-year cycle.



Combat High Energy Bills! Schedule a FREE Home Energy Audit.

In a continuing effort to help our members save energy and money, Guernsey–Muskingum Electric Cooperative provides an experienced Energy Advisor, Ray Crock, to conduct on-site, home energy audits. Appointments are filling up quickly so call today to make your reservation!

Contact our Member Service Department at 1-800-521-9879.
Visit TogetherWeSave.com for helpful energy saving tips.





IN THE SPOTLIGHT

Here comes the **SUN**

GMEC offering subscriptions for OurSolar

A new community solar program from Guernsey-Muskingum Electric Cooperative (GMEC) is making renewable energy easy and affordable.

The OurSolar program gives GMEC members the opportunity to purchase a subscription to panels at a 228-panel solar array installed last November at GMEC's pole yard south of New Concord. Members can subscribe to up to 10 panels. GMEC will measure the carbon-neutral energy produced by each panel every month and calculate it into the member's bill.

"At GMEC, we believe in strength in numbers," said Jerry Kackley, General Manager and CEO. "Installing a renewable energy project on your own is just too expensive and too difficult for most people, but by working together as a co-op, we can make it work."

OurSolar reflects GMEC's balanced approach to energy generation. While most of the power supplied to GMEC will continue to be produced by coal-fired generation, OurSolar gives cooperative members the option to supplement that base-load power with locally produced renewable energy.

"Our goal remains delivering power to our members at the lowest possible cost," said Kackley. "As part of that goal, we want to give our members the option of adding renewables to their energy mix in the easiest and least expensive way possible."

The output from a single panel costs only around 82 cents per month, or about 2.4 cents per kilowatt-hour, depending on weather conditions. Members who subscribe will see the additional charge and energy generated from their panel(s) listed on their bill each month. The solar rate should remain fixed for years, so as wholesale power costs rise, the additional charge for OurSolar power should actually decrease over time.

Panels are limited, so sign up today! For more information and full program requirements, call the cooperative at 800-521-9879 and ask about OurSolar.

OURSOLAR



GUERNSEY-MUSKINGUM ELECTRIC COOPERATIVE CURRENTLY SPEAKING

THANKS FOR THE HIGH MARKS



2017



74

Municipal
Utilities

74

Investor-Owned
Utilities

85

Guernsey-
Muskingum
Electric
Cooperative, Inc.

Your Touchstone Energy® Cooperative 

Member satisfaction data from Q1 and Q2 2017

GUERNSEY-MUSKINGUM ELECTRIC COOPERATIVE, INC.

CONTACT

800-521-9879 | www.gmenergy.com

OFFICE

17 S. Liberty St.
New Concord, OH 43762

OFFICE HOURS

Monday - Friday 7:30 a.m. - 4:30 p.m.
Saturday 8 a.m. - 4 p.m.

This institution is an equal opportunity provider
and employer.

ELECTRIC RATES

Farm and Home Service rate schedule R-1*
Service Availability Charge — \$22/mo.
First 500 kWh/month — 12.169¢/kWh
Over 500 kWh/month — 10.845¢/kWh

Seasonal Residential Service
rate schedule S-1*

Service Availability Charge — \$360/yr.
First 800 kWh/yr. — 19.769¢/kWh
800 to 6,000 kWh/yr. — 10.645¢/kWh
Over 6,000 kWh/yr. — 10.845¢/kWh
(Minimum annual charge — \$360/yr. for
service between March 1, 2017, and Feb.
28, 2018)

Commercial Service rate schedule C-1*
Service Availability Charge — \$24/mo.
First 1,500 kWh/mo. — 12.569¢/kWh
Over 1,500 kWh/mo. — 10.845¢/kWh

*Rider T — Kilowatt-Hour Tax applies to
all rate schedules and must be added to
the rates shown.

First 2,000 kWh/mo. — 0.465¢/kWh
Next 13,000 kWh/mo. — 0.419¢/kWh
Over 15,000 kWh/mo. — 0.363¢/kWh

BOARD OF DIRECTORS

Jay Gray
Chairman

Brian Hill
Vice Chairman

Ed Bay
Secy.-Treasurer

John Enos
Duane Parks

Jim Rex
Shirley Stutz
Directors

Jerry Kackley
General Manager/CEO

Joseph P. Boeckman
Counsel

